

LITHIUM ION BATTERY CELLS

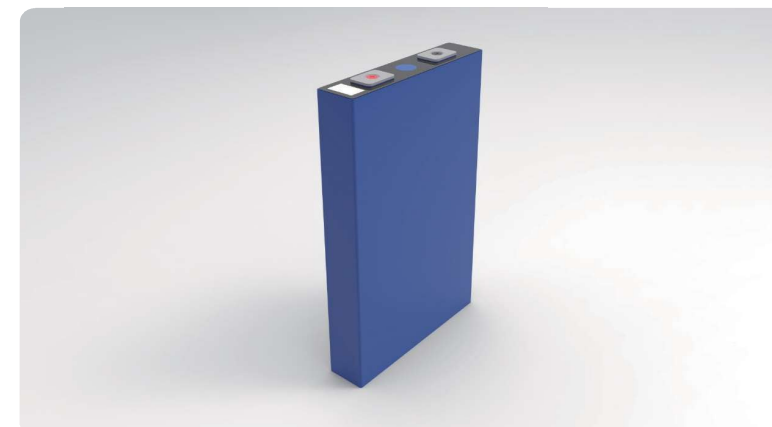


280AH LITHIUM BATTERY CELL

Model number	ZJLB-IFP71173207-280Ah
Technical data	
Rated capacity(Ah)	280Ah
Operating Voltage (VDC)	2.5-3.65V(0°C-60°C) 2.0-3.65V(-20°C-0°C)
Impedance(1 KHz)	(0.18±0.05)mΩ
Operating temperature(charge)	0-60°C
Operating temperature(discharge)	-30-60°C
Self discharge	≤3.0%/Per month
Life Cycle	≥7000 25°C 0.5C/0.5C ≥70%
Weight	5.43±0.20Kg
General data	
Dimension(mm)	29.5(+1, -0.5) 135(+0.5,-0.5) 218.6(+0.5, -0.5)
Certification	GB/T36276, GB/T31484, GB/T31486, GB38031, IEC62619, UL1973, UN38.3



100AH LITHIUM BATTERY CELL



Model number	ZJLB-IFP30135226-100Ah	ZJLB-IFP30135226-100Ah
Technical data		
Rated capacity(Ah)	100Ah	100Ah
Operating Voltage(VDC)	2.50V-3.65V(0°C -60°C) 2.00V-3.65V(-20°C -0°C)	2.50-3.65(0°C -60°C) 2.00-3.65(-20°C -0°C)
Internal Resistance(1KHz)	≤0.40mΩ(1KHz)	≤0.40mΩ(1KHz)
Operating temperature(charge)	0-55°C	0-55°C
Operating temperature(discharge)	-20-60°C	-20-60°C
Self discharge	≤3.0%/Per month	≤3.0%/Per month
Life Cycle	≥6000 25°C 0.5C/0.5C ≥70%	≥3000 (25±2°C 1C/1C ≥80%)
General data		
Weight	1.90±0.05Kg	≤1.95Kg
Dimension(mm)	29.5(+1,-0.5) 135(+0.5,-0.5) 218.6(+0.5,-0.5)	30(+1.0,-0.5) 135±0.5 226.5±0.5
Certification	GB/T36276, GB/T31484, GB/T31486, GB38031, IEC62619, UL1973, UN38.3	